

世德工業股份有限公司

法人說明會
2025.12.10

免責聲明 Disclaimer

- ▶ 本資料及相關討論可能包含對於未來展望的表述。該類表述是基於現況所得的預期，可能受各種已知或未知風險及不確定性因素影響，而造成實際結果與陳述內容發生顯著不符，使用者應自行判斷與承擔投資風險。
- ▶ This presentation and release contain “forward-looking statements” which may include projections of future results of operations, financial condition or business prospects based on our own information and other sources. Our actual results of operations, financial condition or business prospects may differ from those expressed or implied in these forward-looking statements for a variety of reasons, including but not limited to market demand, price fluctuations, competition, international economic conditions, supply chain issues, exchange rate fluctuations and other risks and factors beyond our control. The forward-looking statements in this release reflect the current belief of CHUN YU WORKS & CO.,LTD as of the date of this release. CHUN YU WORKS & CO.,LTD undertakes no obligation to update these forward-looking statements for events or circumstances that occur subsequent to such date.

目錄 CONTENTS

- ▶ 1. 公司現況
- ▶ 2. 財務概況
- ▶ 3. 未來展望
- ▶ Q&A

Company Strategic Map

SUMEEKO

☀ **Headquarter (Full function)**

● **Factory / Office / Warehouse**

● **Warehouse / Office**

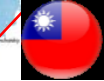
● **Office**

Harrison Township + Fraser

Neuss

Kaohsiung

Pingtung



Why Sumeeko Fastener

► World Class Quality

- GM supplier quality excellence award (2012-2014)
- TS16949, ISO14001, ISO17025 Certifications

► Competitive Cost

- Automatic production & optical inspection
- Low-cost manufacturing in Taiwan & China

► Global Logistics Service

- Distribution warehouses (USA, Germany, Taiwan, China)
- EDI via PLEX Cloud ERP
- JIT, buffer stock, consignment inventory

► Products Offering

- Comprehensive products
- Exceptional technical support
- Customized, assembled fasteners



Local Delivery



One Stop Shop

Taiwan Kaohsiung 企業總部



高雄大發廠8,000 m²

SUMEKO

Taiwan Pingtung plant view屏東科技園區



屏東科技園區
16,500 m²

SUMEEKO

德國子公司 Maxmothes plant view

Production area

Truck load on area



Office

We rent Audi to train fresh man

56,000m²
(610,910 ft²)

Warehouse area

美國子公司 MMM/ IAA warehouse



Fraser 30,000m²

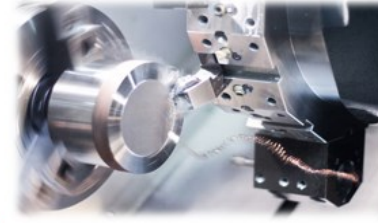


USA warehouse 1600m²

Manufacturing Technology



Cold
Forming



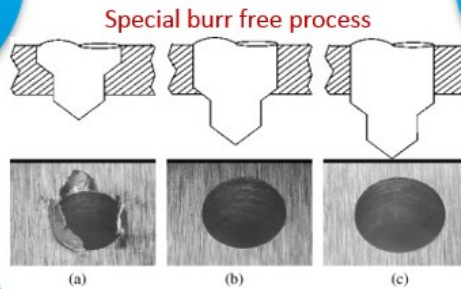
Machining
&
Drilling



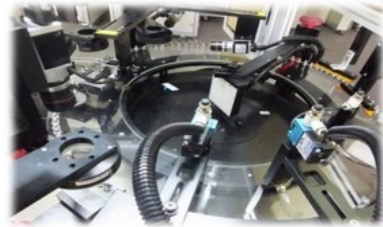
Thread
Rolling



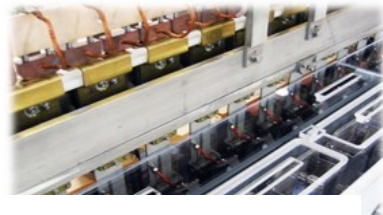
Heat
Treatment



Quality
Control



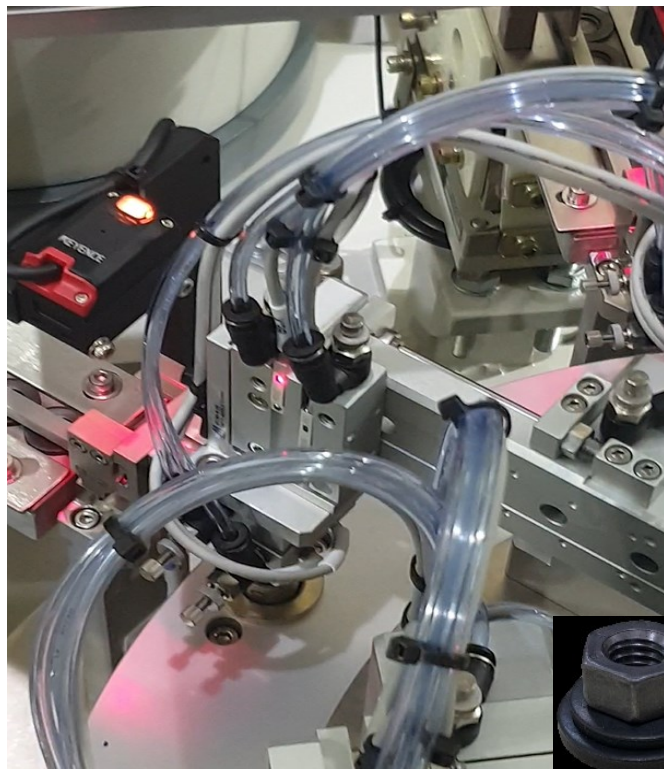
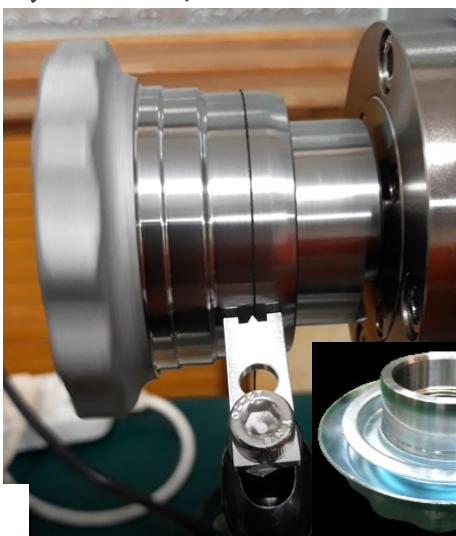
Plating



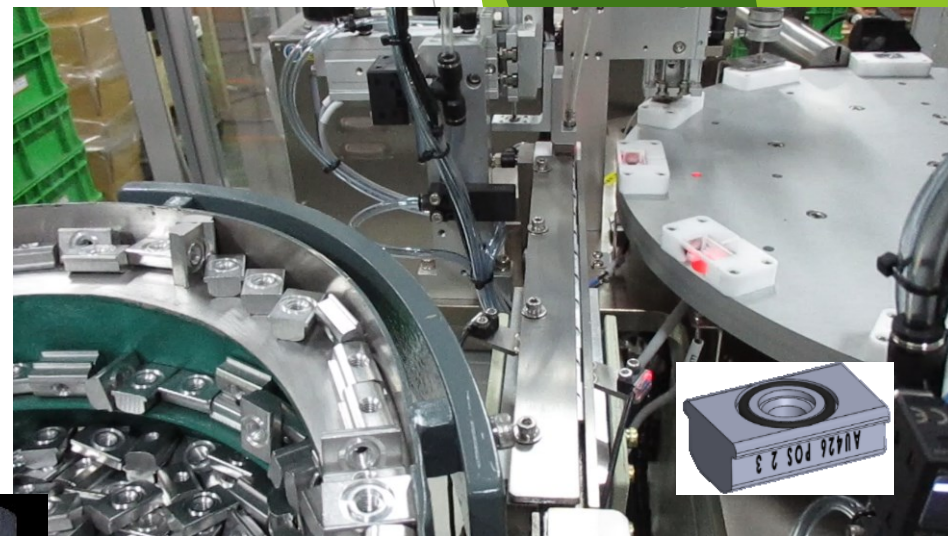
自動化生產線與客製化篩檢機



繫留螺絲組裝設備



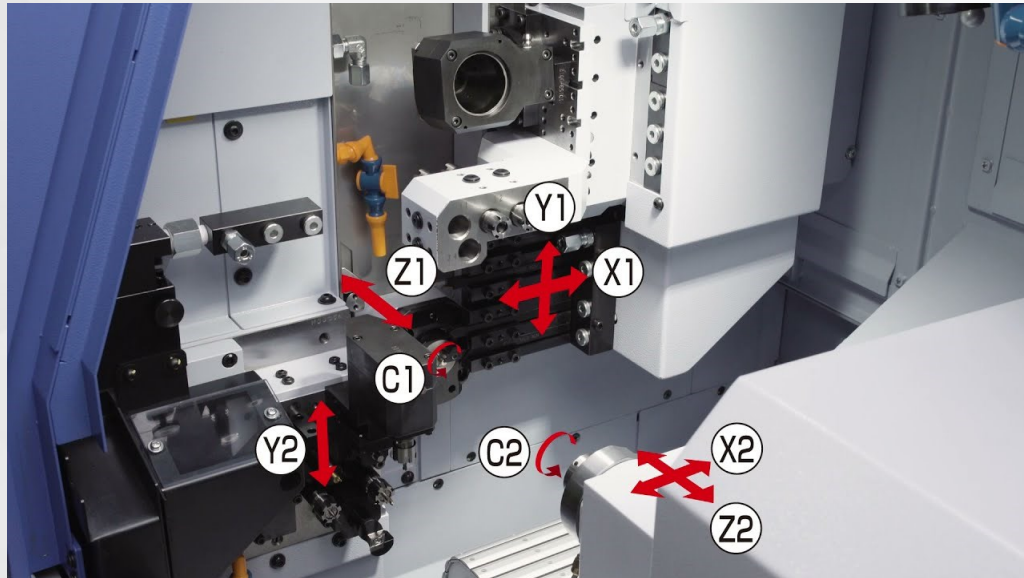
轉輪式高速緊湊型組裝線



SUMEEKO

Pinion nut客製化品質確認設備

MaxMothes production capability



=



Turning

Mat. Rotating, cutter moves X-Y axis

+



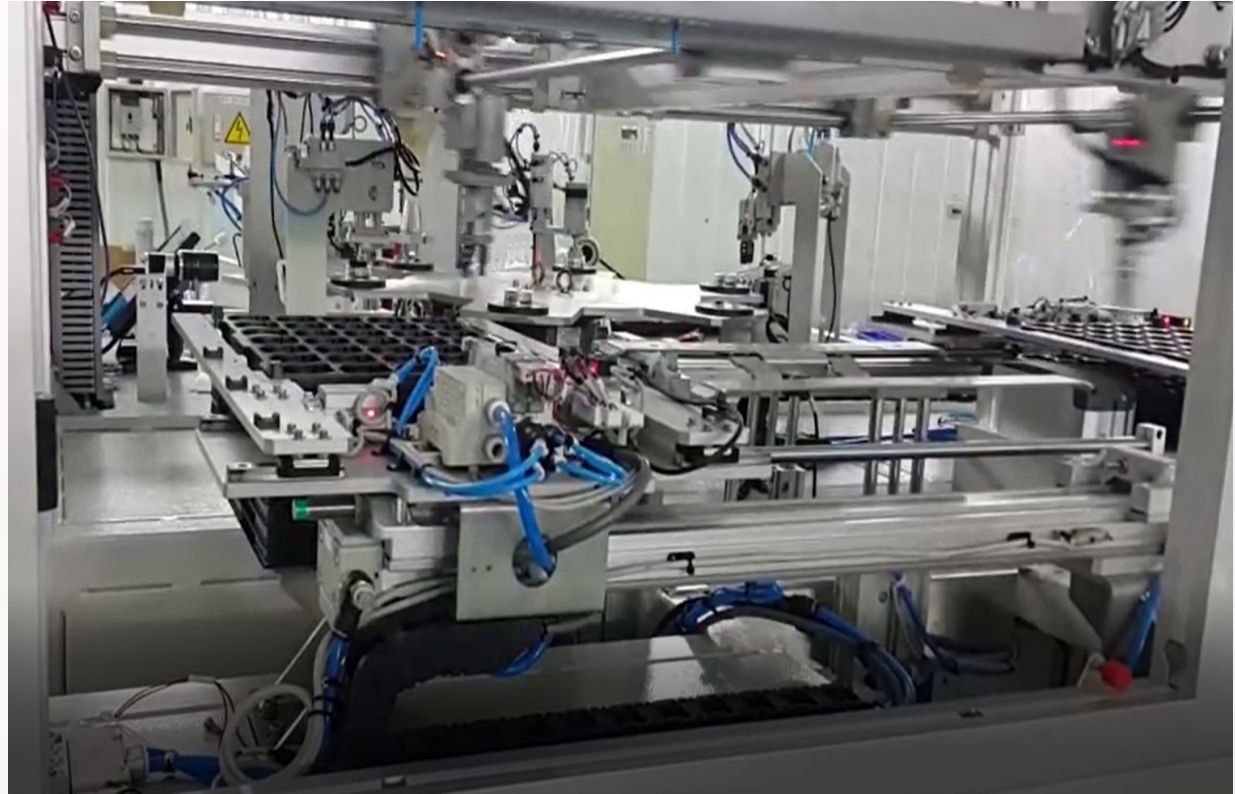
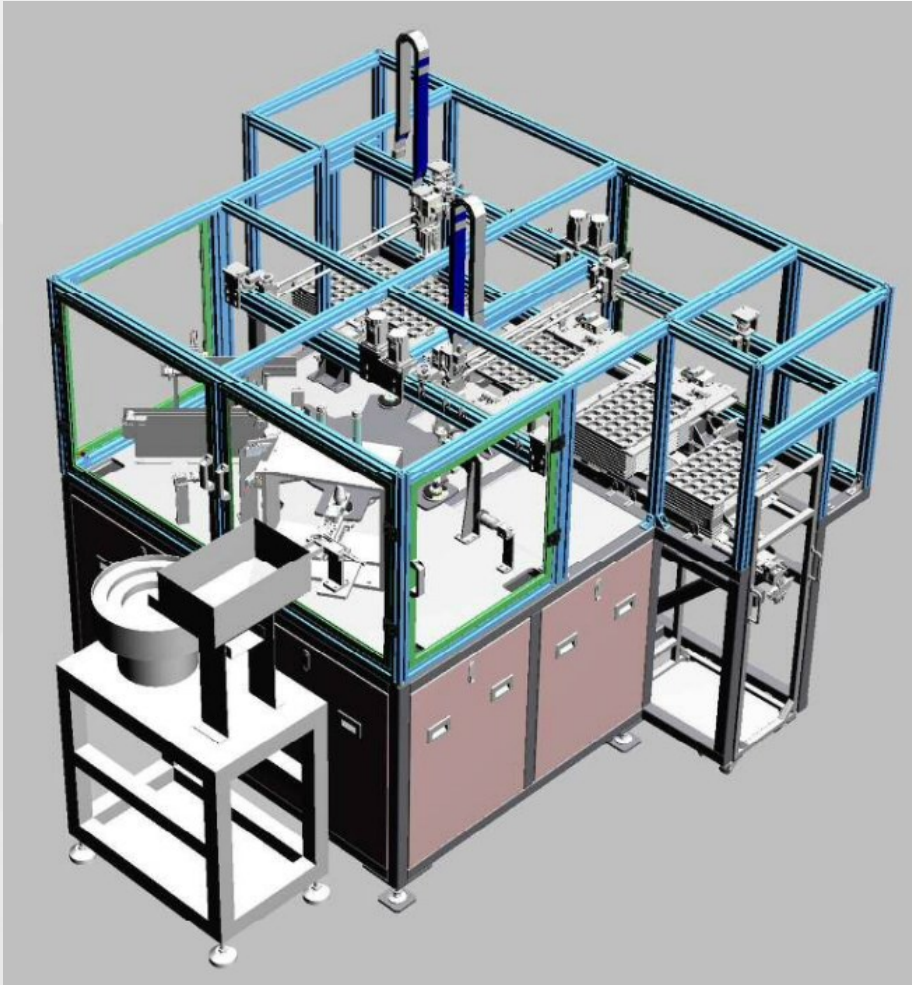
Milling

Mat. Fixed, cutter move X-Y-Z axis

Integration machining

Combination of Turning and Milling

MaxMothes customized production capability









Customized wood package



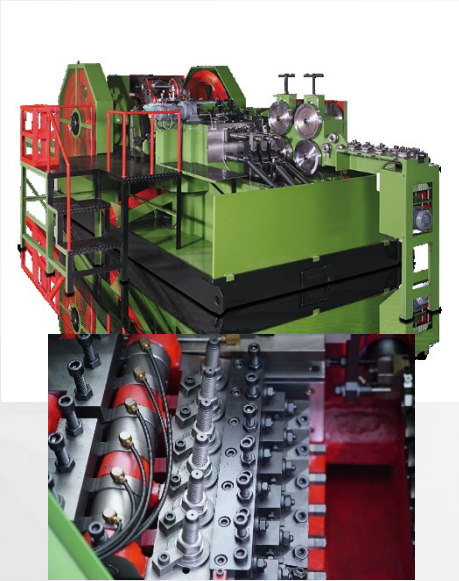
Cargo storage area



Sample storage area



Cargo loading area



Screw forging machine



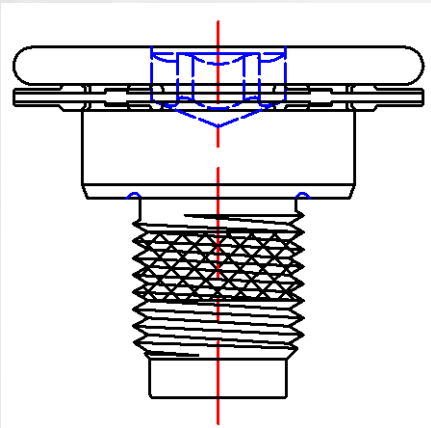
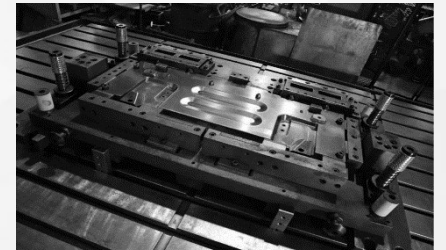
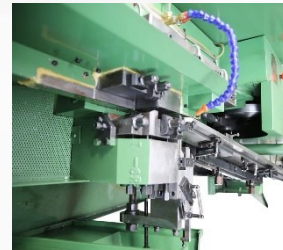
Nut forging machine



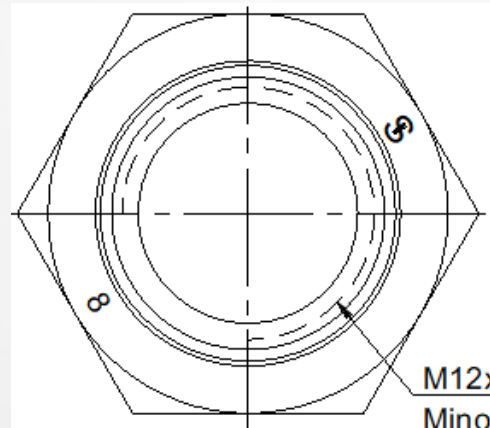
Threading machine



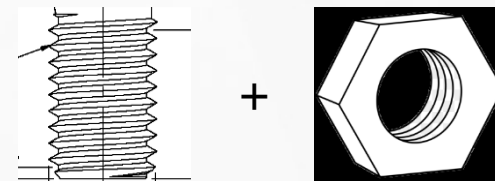
Stamping machine



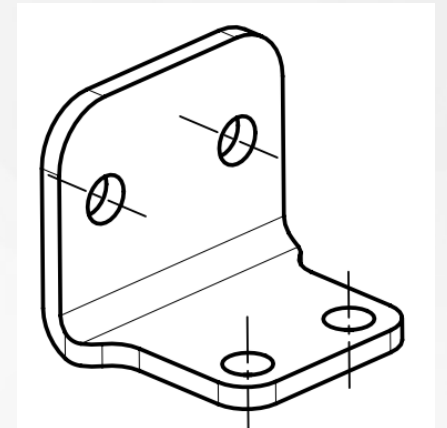
Most kinds of screw & bolt



Most kinds of nut & bushing



Threading & tapping



Sheet & billet stamping

In house production - By Machine & product



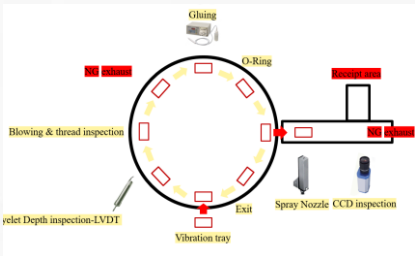
CNC turning



Eddy current



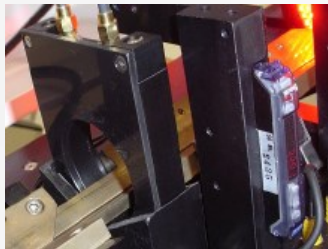
Optical sorting



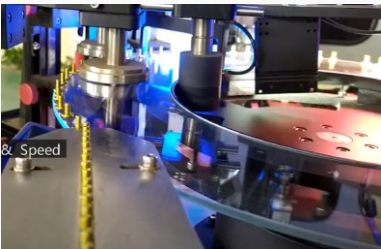
Customized / Special assembly line



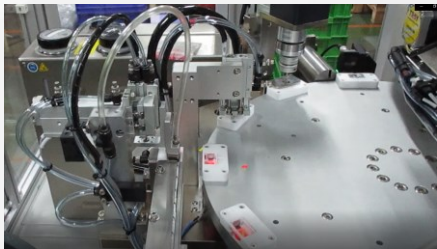
Precise machining



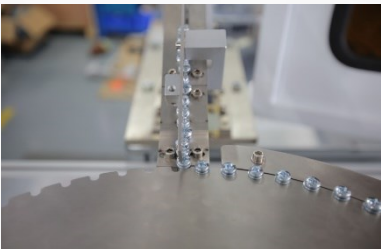
To sort mixed and unhardened



Standard parts up to 10 PPM

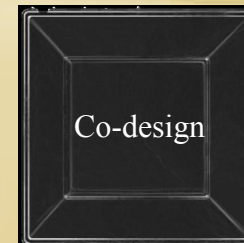
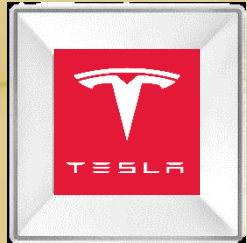
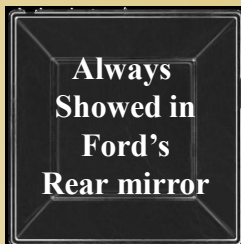


For special customized parts



As Tier 1 supplier to

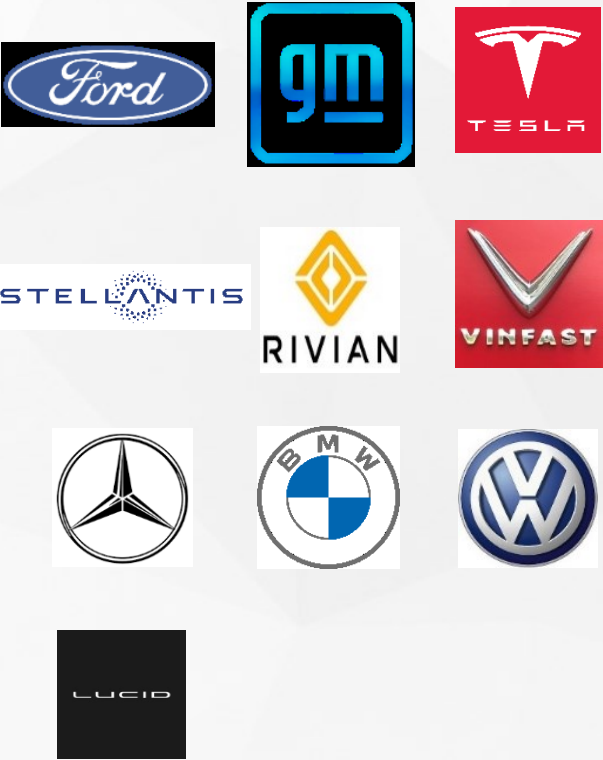
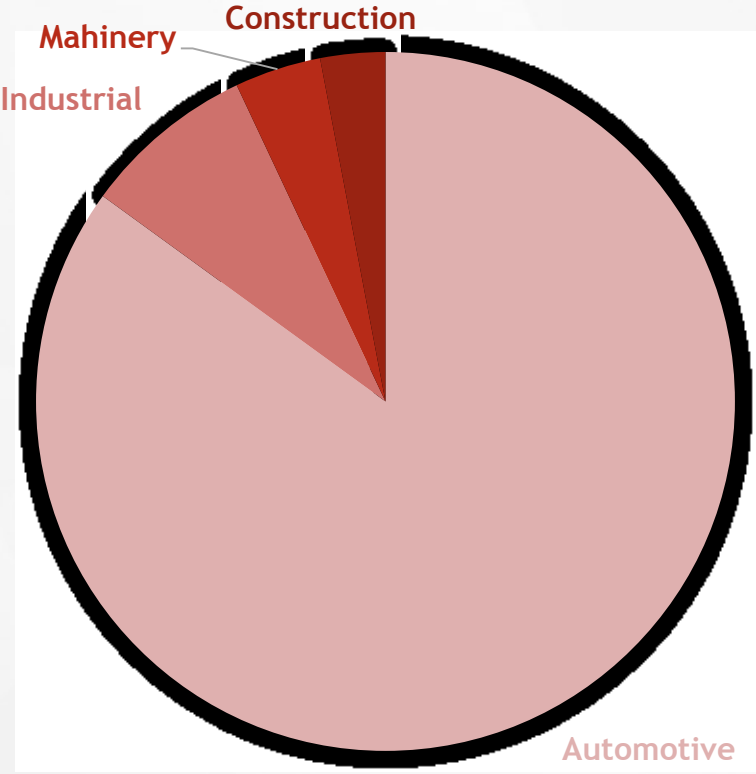
SUMEKO

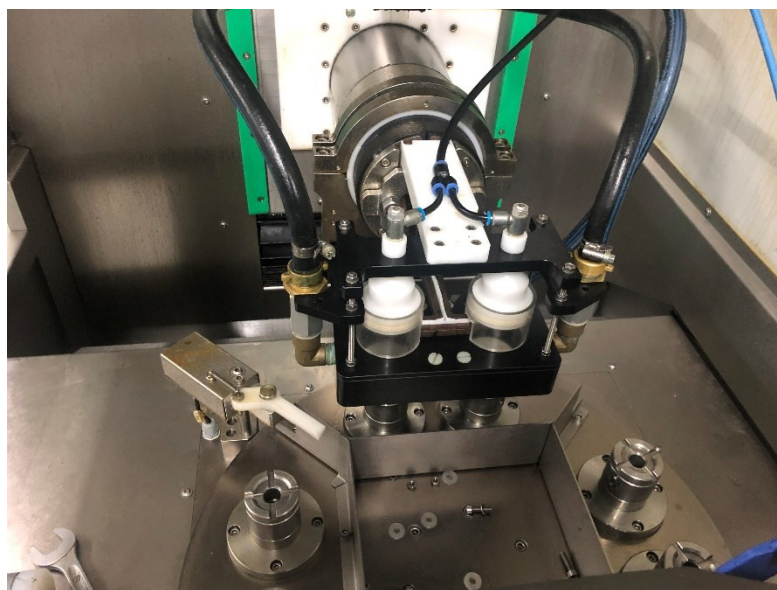


Sumeeko Business Scope



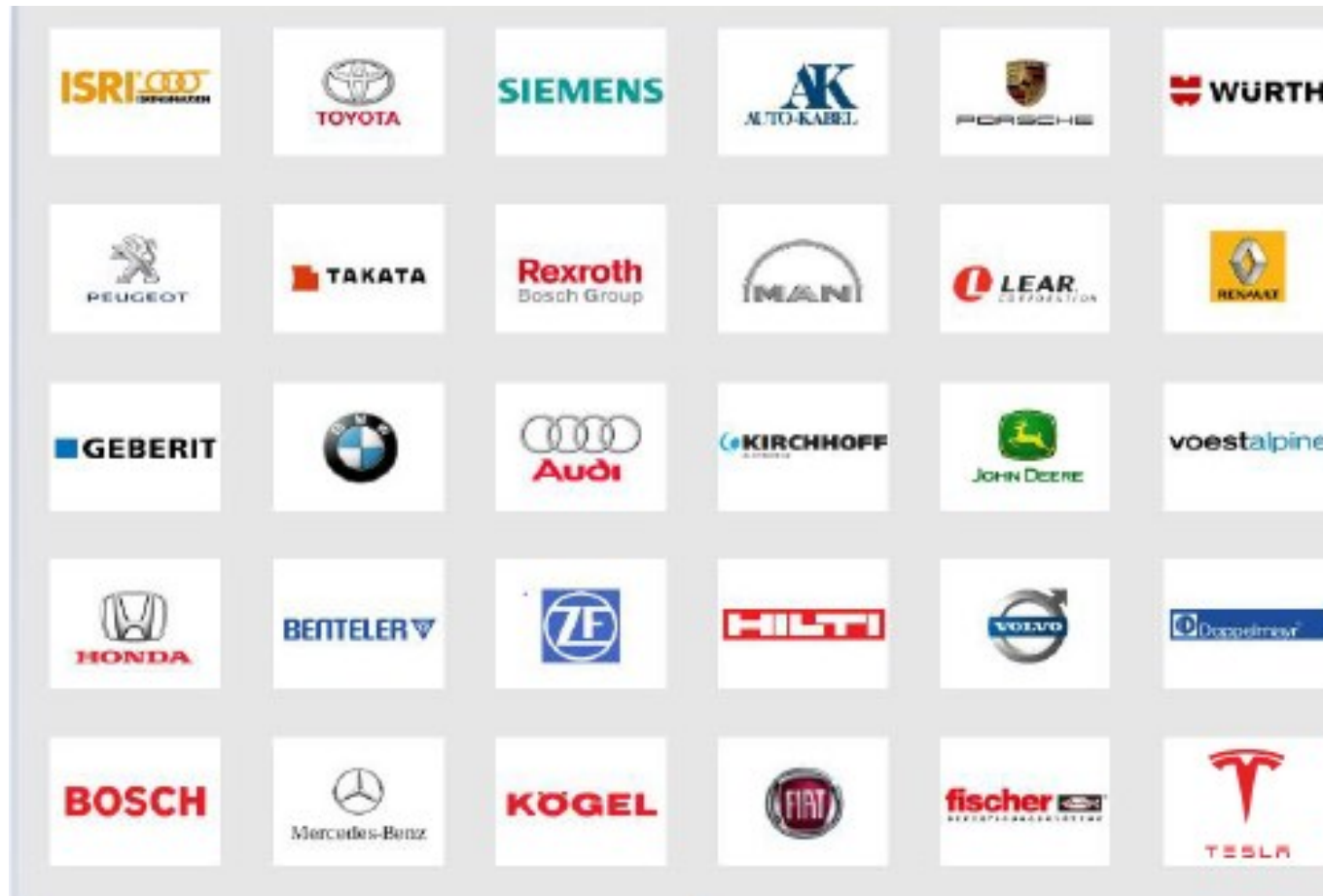
SUCCESSFUL PARTNERSHIP



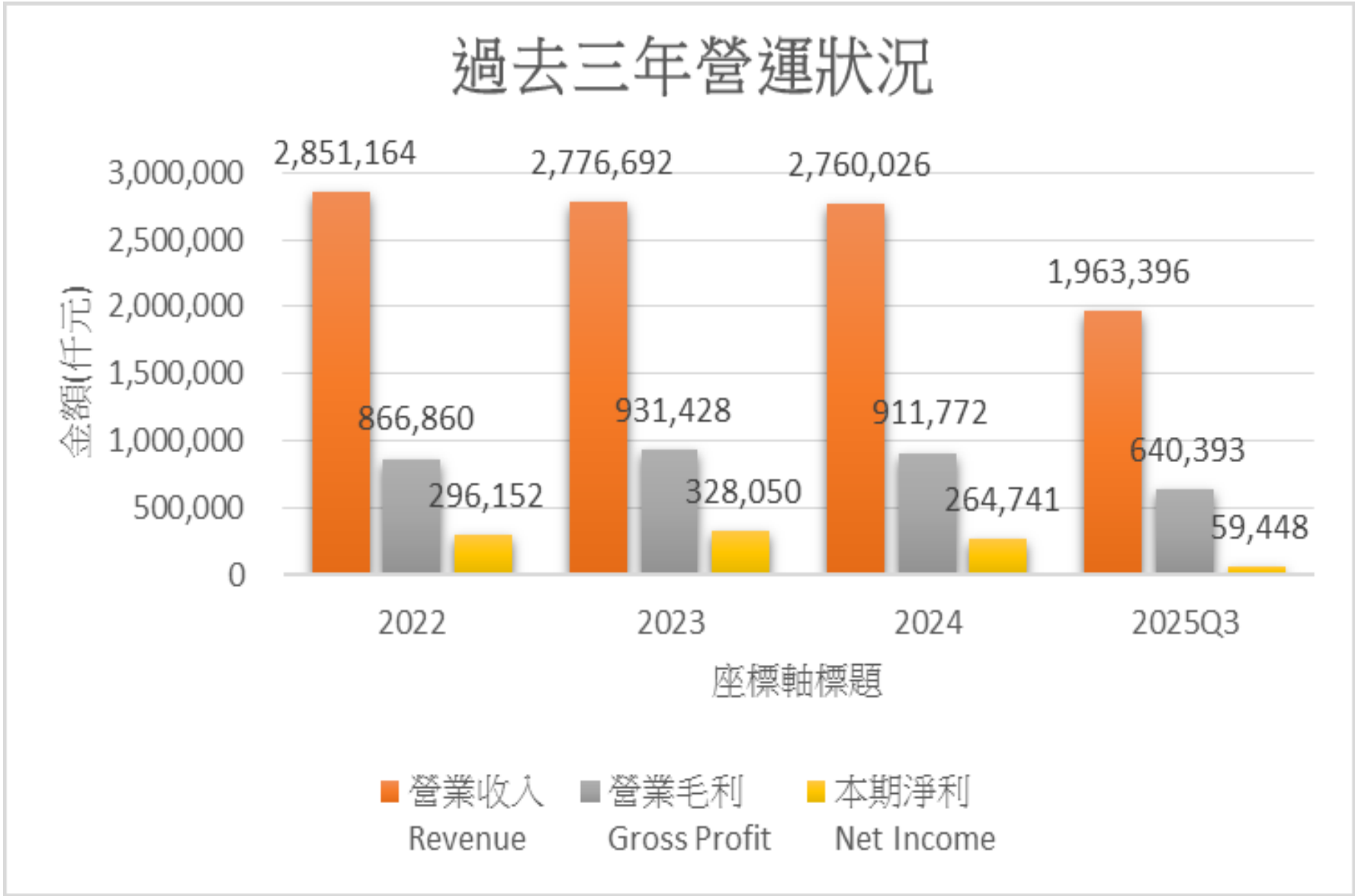




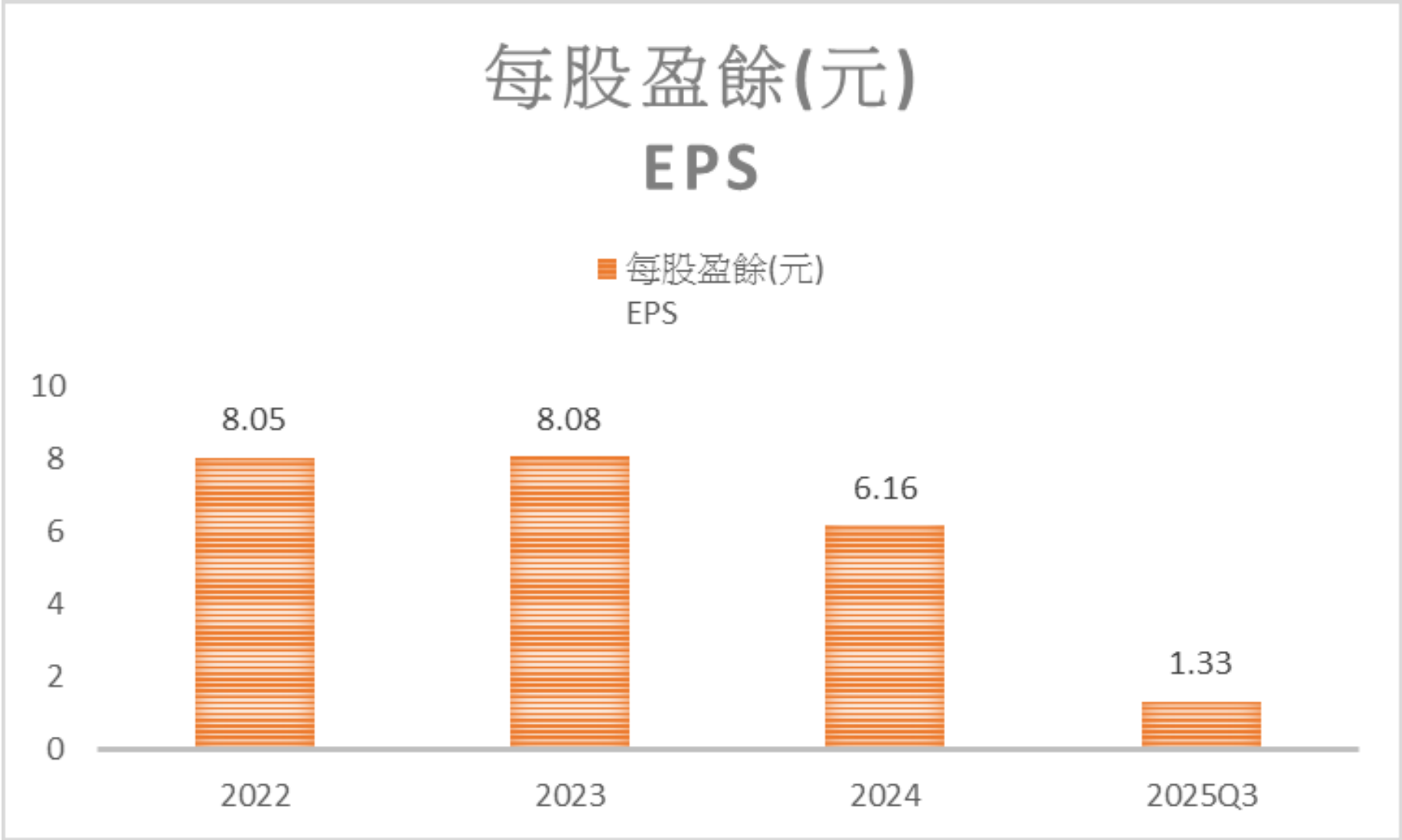
- Industry customers, OEMs as well as First tiers
- Direct deliveries as well as via market companions



2022-2025Q3財務資訊



2022-2025Q3年EPS



Q&A

1. 美國何時通過認證?
2. 德國如何虧轉盈?

Thank You for listening